



PNG POWER Ltd

PO Box 1105 BOROKO NCD, Papua New Guinea

QUOTATION NO.: E4357 / 2023

CONSTRUCTION OF SECURITY SPIKE FENCING FOR PPL ASSETS AND
THE NEW 8MW POWER STATION AT DOBEL, W.H.P., MT. HAGEN.

DRAWING INDEX

SHEET NO.

DWG NO.

TITLE

Sheet 00 of 02

GPC-DPS-SF1

Cover & Drawing Index

Sheet 01 of 02

GPC-DPS-SF2

Site Locality & Layout Plan

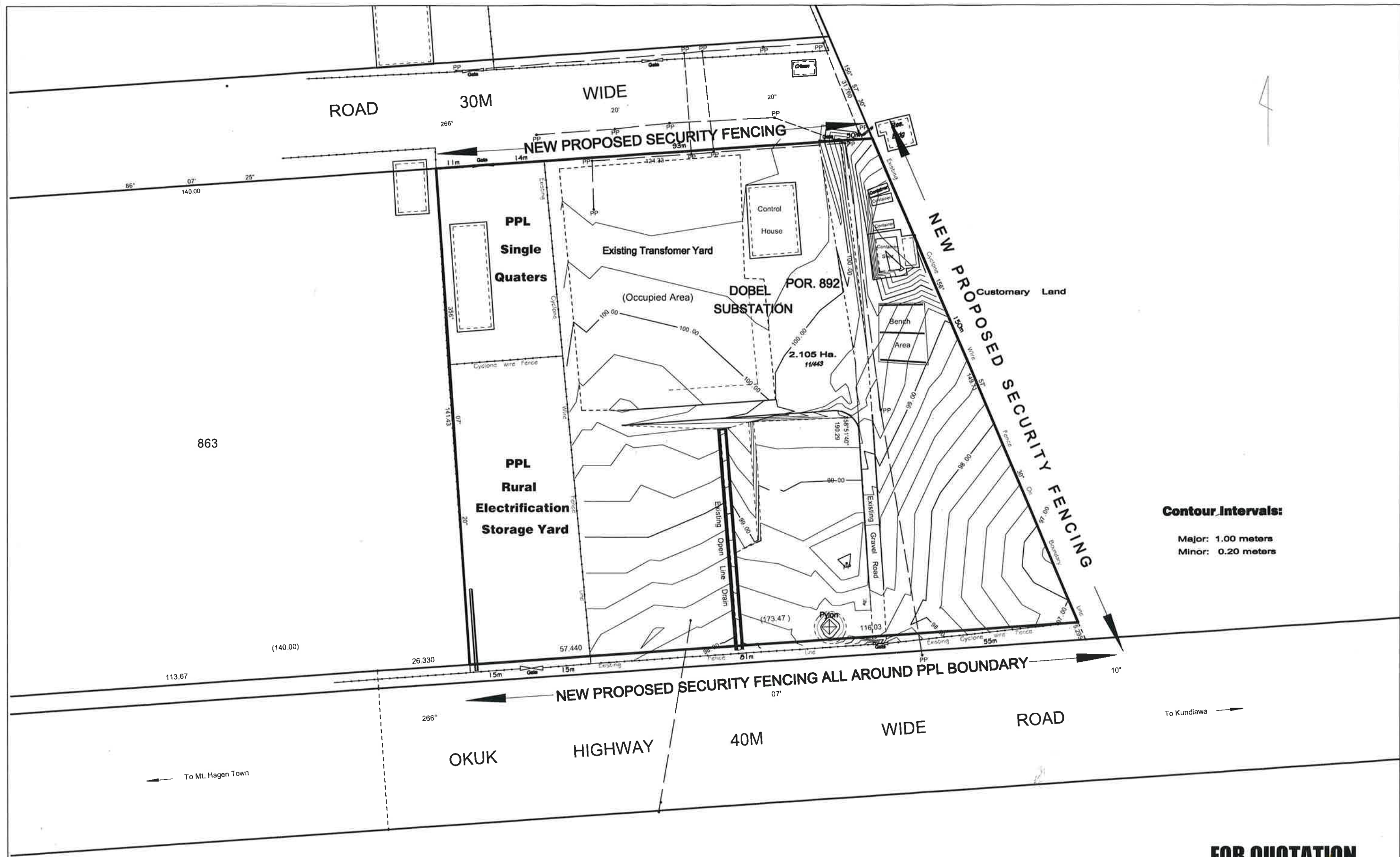
Sheet 02 of 02

GPC-DPS-SF3

Security Spike Fencing Plan and Details

FOR QUOTATION

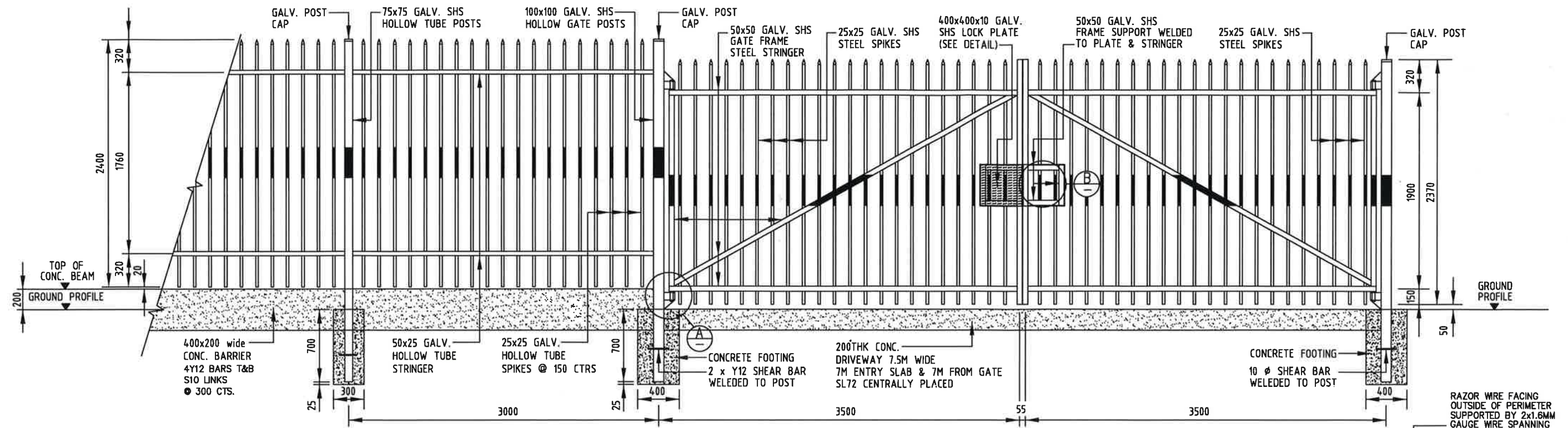
Prepared By:	TLC		20/09/2023	Location	DOBEL POWER STATION, W.H.P.
Checked By:	CCE		20/09/2023	Title	COVER & DRAWING INDEX
Checked By:				A1	
Endorsed By:	MGP			Number	GPC-DPS-SF1
Approved By:	AGMAD		20/09/23	Revision	Sheet 00 of 02



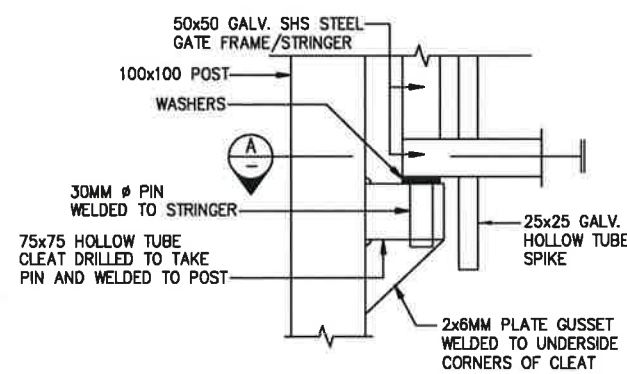
Contour Intervals:
Major: 1.00 meters
Minor: 0.20 meters

FOR QUOTATION

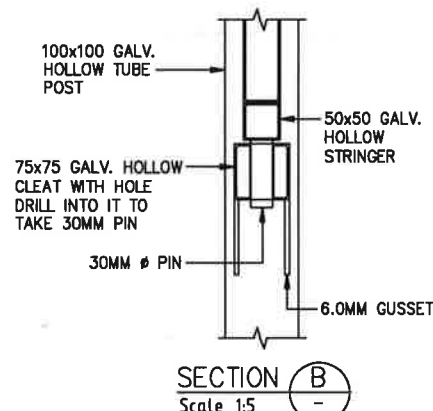
CAD Filename		Rev.	Revision		By	Chk'd	Date	<div></div> <div>PNG POWER Ltd P. O. Box 1105, BOROKO 111. NCD. Papua New Guinea Telephone: (675) 324 3317 Facsimile: (675) 323 4982 E-mail: oole@pngpower.com.pg</div>	Drawn	ST&D	Location	DOBEL POWER STATION, W.H.P.									
H:/2023 PROJECTS/ DOBEL / 8MW POWER STATION/ CIVIL WORKS									Designed	ST&D	Title	SITE LOCALITY & LAYOUT PLAN									
Date Plotted:		Scale:							Checked	TLC	A1										
SEPTEMBER, 2023		1:500							Endorsed	MGP	Number	GPC-DPS-SF2					Sheet 01 OF 02				
									Approved	AGMAD	Revision										



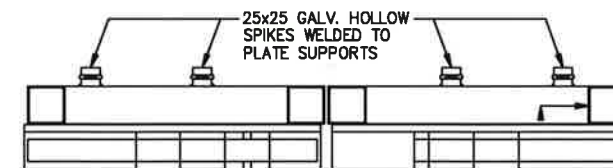
SPIKE SECURITY FENCING ARRANGEMENT
Scale 1 : 20



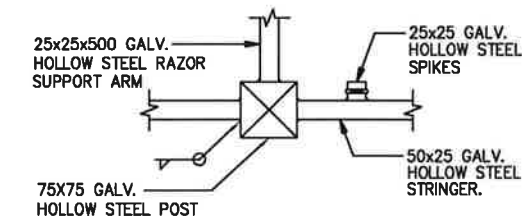
DETAIL A
Scale 1:5



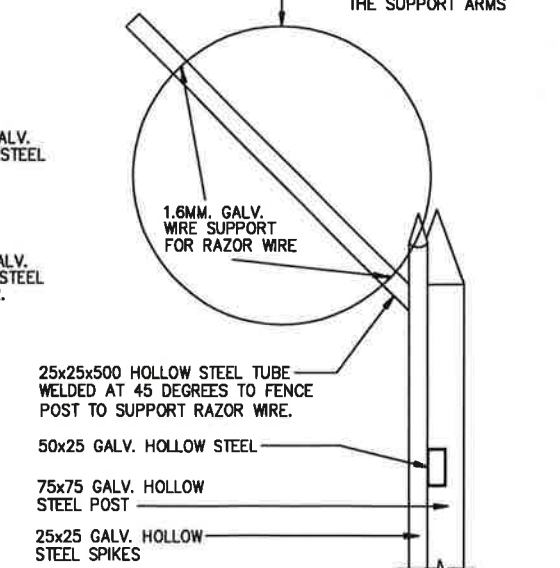
SECTION B
Scale 1:5



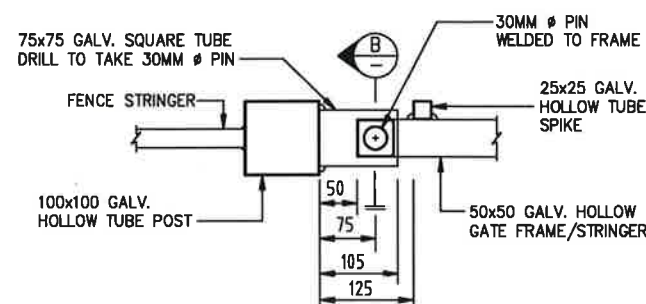
PLAN - LOCK PLATE
Scale 1 : 5



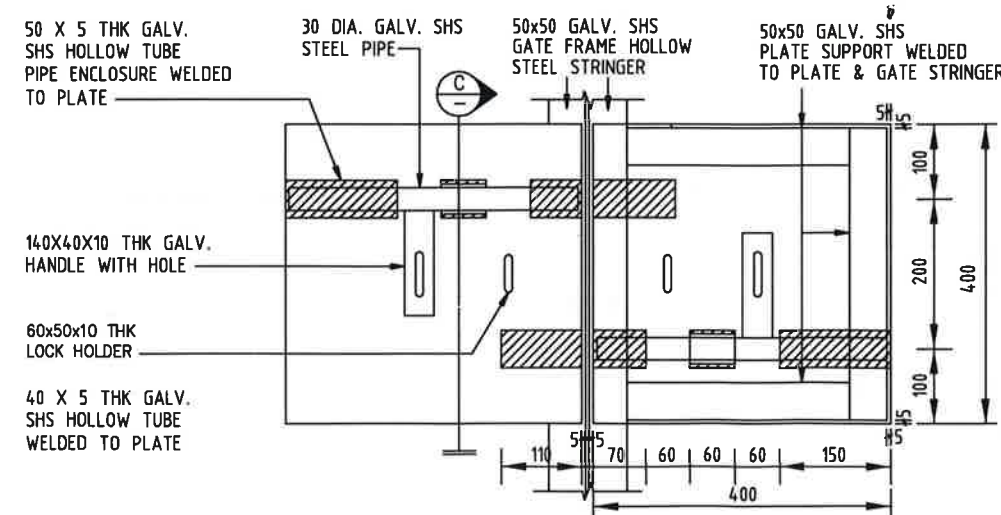
PLAN - BARB WIRE SUPPORT
Scale 1:5



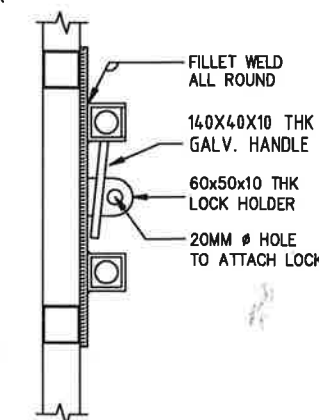
SECTION THROUGH BARB WIRE
Scale 1 : 5



SECTION A
Scale 1:5



DETAIL B
Scale 1:5



SECTION C
Scale 1:5

NOTES

1. LOCATION OF 4X DOUBLE GATES AS PER THE SITE LAYOUT SHALL BE CONFIRMED ON SITE WITH THE CONTRACTOR DURING CONSTRUCTION.
2. ALL MATERIALS USED SHALL BE PAINTED WITH INORGANIC ZINC SILICATE PRIMER ON TOP OF BLAST CLEANED STEEL WELDED SURFACES. A FINAL COAT SHALL BE APPLIED BEARING PPL BLUE AND WHITE COLOURS AS PER THE DRAWING.
3. ALL EXISTING FENCING MATERIALS REMOVED INCLUDING POSTS, AND MESH WIRE SHALL BE STORED NEATLY WITHIN THE VICINITY OF THE POWER STATION AREA AT A DESIRED LOCATION.
4. GATES TO BE FITTED WITH HEAVY DUTY PADLOCKS AND SHALL BE CAPABLE OF BEING OPERATED FROM EITHER SIDE OF THE GATES. LOCK-PLATES TO BE LOCATED INSIDE OF THE GATES.

FOR QUOTATION

CAD Filename	Rev.	Revision	By	Chk'd	Date
H:/2023 PROJECTS/ DOBEL / 8MW POWER STATION/ CIVIL WORKS					
Date Plotted:	Scale:				
SEPTEMBER, 2023	AS SHOWN				



PNG POWER Ltd

P. O. Box 1105, BOROKO 111. NCD., Papua New Guinea
Telephone: (675) 324 3317
Facsimile: (675) 323 4982 E-mail: oole@pngpower.com.pg

Drawn	TLC	Location	DOBEL POWER STATION, W.H.P.
Designed	TLC	Title	SECURITY SPIKE FENCING
Checked	CCE	A1	PLAN & DETAILS
Endorsed	MGP	Number	GPC-DPS-SF3
Approved	AGMAD	Revision	
		Sheet	02 OF 02